

Human-Fire Interactions in the Boreal Forest of Interior Alaska

A symposium for policy-makers,
researchers, and everyone
interested in wildland fire

Fire, climate, people, and the boreal forest



Human-Fire Interactions

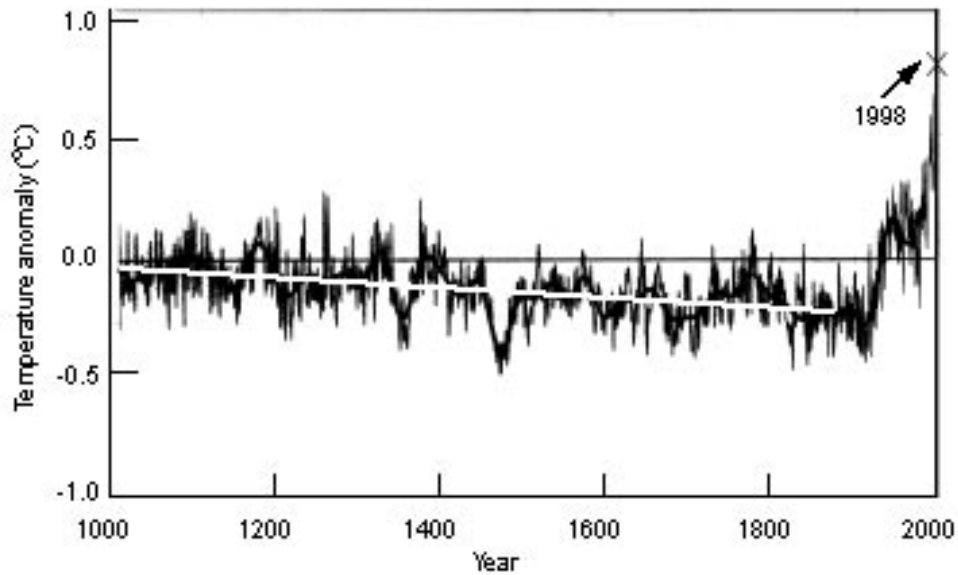
- Interdisciplinary project
- Funded by National Science Foundation and Murdock Foundation
- Supported by University of Alaska Fairbanks and Bonanza Creek LTER

An interdisciplinary effort

- **Ecologists** (Calef, Chapin, DeWilde, Fresco, McGuire, Rupp)
- **Anthropologists** (H. Huntington, Natcher)
- **Political scientists** (Lovecraft, Trainor)
- **Economists** (Baer, Little, Wall, Naylor)
- **Community members** (O. Huntington)
- **Teachers** (Bifelt)

Groups that helped

- Huslia Tribal Council
- Tanana Chiefs Conference
- Yukon First Nations
- Alaska Fire Service (BLM)
- Alaska Dept. of Fish and Game (Subsistence Division)
- Alaska Division of Forestry
- Fairbanks North Star School District
- U.S. Fish and Wildlife Service
- U.S. Forest Service
- U.S. Geological Survey
- Yukon Tribal Government

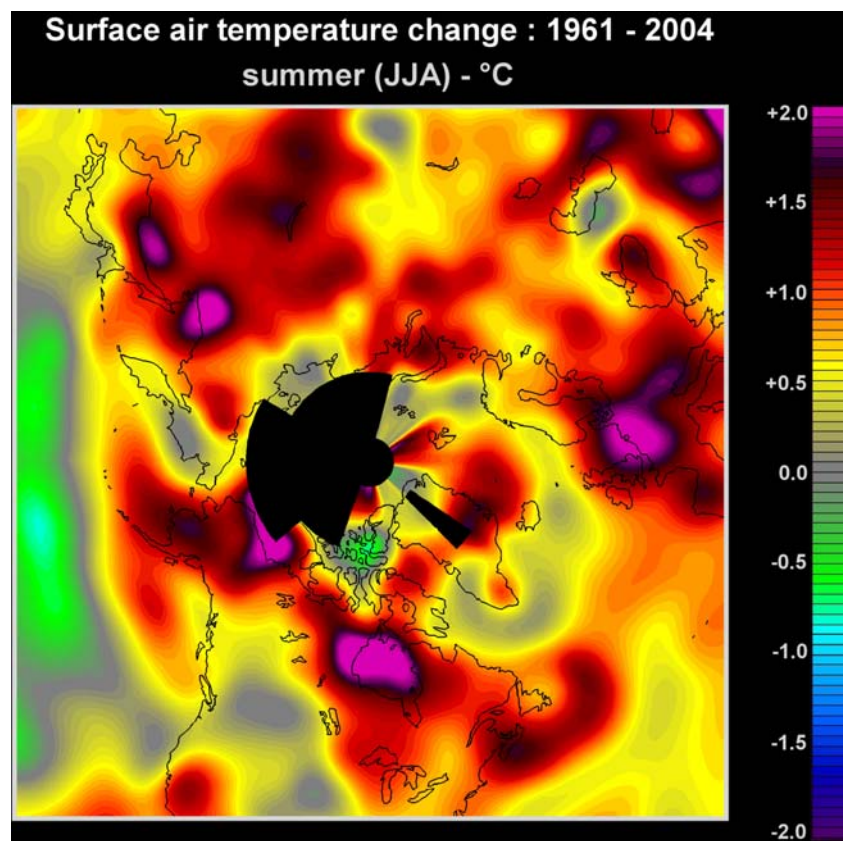


Mann et al.

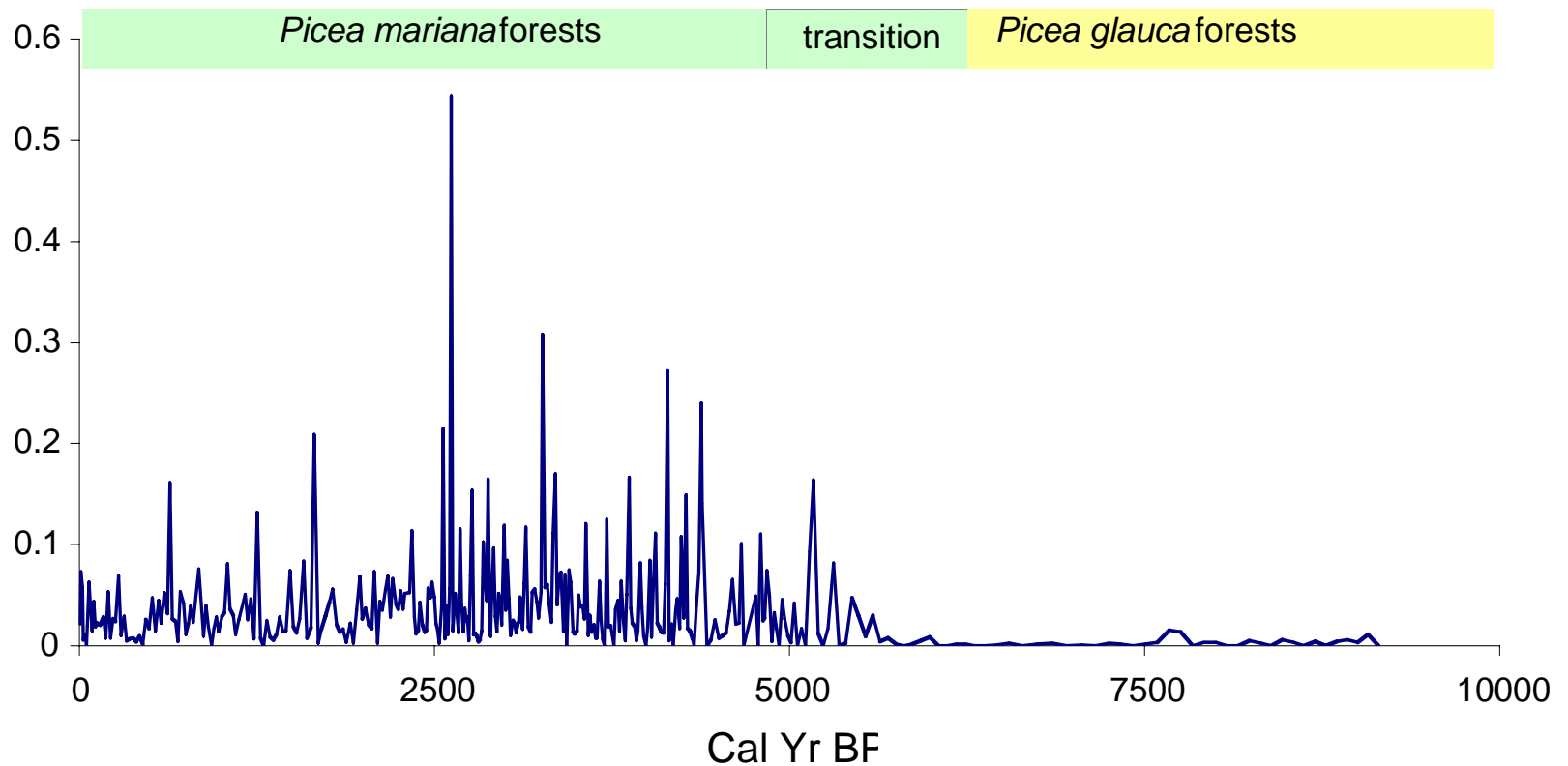
Polar amplification

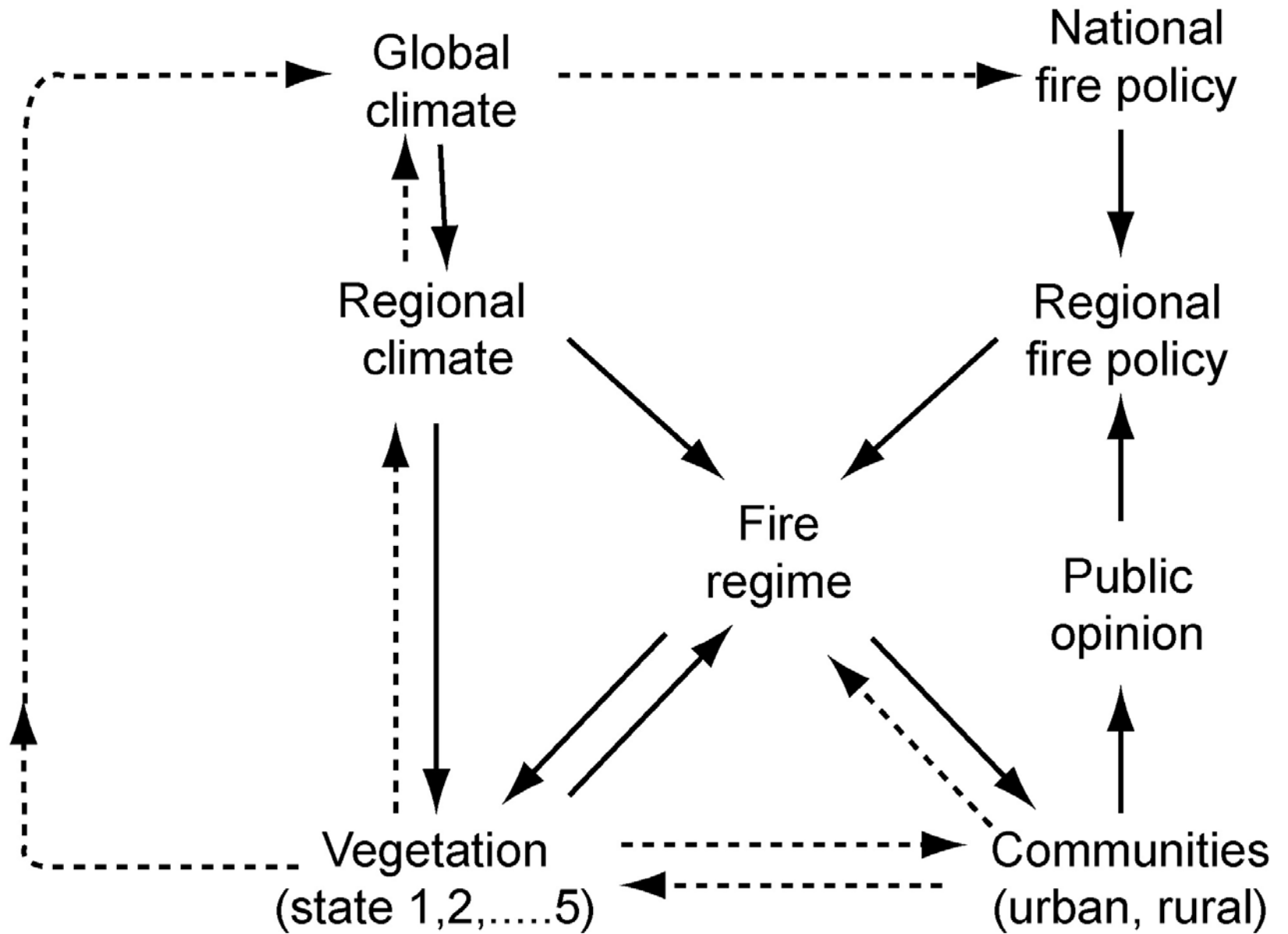
Chapman and Chapin

Global to arctic



Species have a large effect on fire probability





How does it all fit together?

What will happen next?