

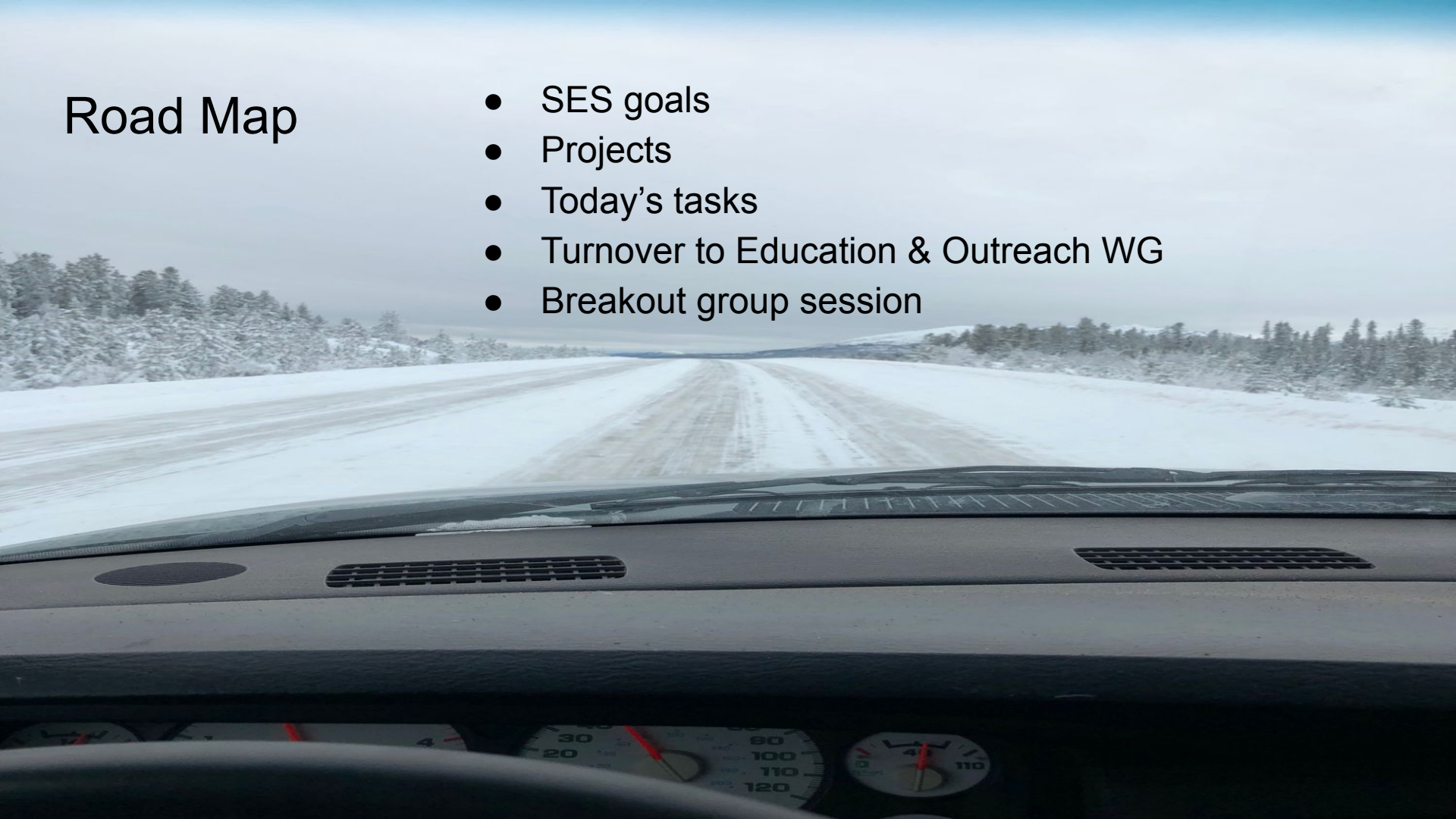
Social-Ecological Systems

Values Survey & Breakout Discussion

Todd Brinkman, Taylor Stinchcomb, Teresa Hollingsworth, Caroline Brown, and
many others

Road Map

- SES goals
- Projects
- Today's tasks
- Turnover to Education & Outreach WG
- Breakout group session



Goal: Years 1 & 2

- Initial: Conduct research that helps BNZ researchers better understand how they can design/modify/communicate research that is relevant, salient, and useful to a diversity of interest groups
 - Communities, managers, policy makers, tribal organization, boreal forest residents

Goal: Years 3-5

- Work with and support BNZ investigators and WGs to implement research that relevant, salient, and useful to Boreal Forest interest groups

Problem (Knowledge Gap)

- We don't have comprehensive and representative information on Interior Alaska residents' values and attitudes
 - Climate-related changes, concerns, and priorities



Projects

- Q-Project: Identify social perspectives on and research priorities related to environmental change in Interior Alaska
- EVO Project: Identify the environmental value orientations (EVO) and explore their relationships
 - Patterns and clusters of basic beliefs that people have toward how society should interact with and use the environment
 - Benefits
 - Enhance awareness of implications of our research
 - More effective communication strategies
 - Increased capacity to inform decision making and policy

Projects

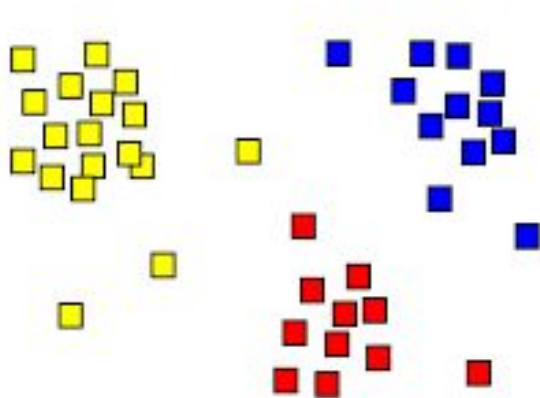
- Q-Project: Identify social perspectives on and research priorities related to environmental change in Interior Alaska
- EVO Project: Identify the environmental value orientations (EVO) and explore their relationships
 - Patterns and clusters of basic beliefs that people have toward how society should interact with and use the environment
 - Benefits
 - Enhance awareness of implications of our research
 - More effective communication strategies
 - Increased capacity to inform decision making and policy

Q-Project - Methods

- Co-Investigators: Dr. Taylor Stinchcomb & Teresa Hollingsworth
- Methods
 - Exploratory focus-group discussions & literature review
 - What are the important environmental changes? Implications?
 - What does the research community need to do about it?
 - What & How
 - Generate a list of statements (“concourse”)
 - Implement a “Q-sort” process
 - Ranks (sorts) statements
 - Analyze to reveal

Q-Project Outcomes

- Groupings (clusters) of different perspectives
 - Applied Science, Basic Science, Engagement, Communication, Institutional Ethics
- Understand each group's priorities (what they ranked the highest)
- Inform (and potentially) guide future BNZ research



RESEARCH ARTICLE | [Open Access](#) |

Using Q-methodology to understand stakeholder perspectives on a carnivore translocation

David Bavin, Jenny MacPherson, Huw Denman, Sarah L. Crowley, Robbie A. McDonald

Translating legitimacy: Perspectives on institutions for human-wildlife coexistence in central India

Daniel J. Read ^{a, b} , Ramesh G. Mawaskar ^c, Bilal Habib ^b



ELSEVIER

Biological Conservation

Volume 203, November 2016, Pages 197–206



Perceptions of environmental justice and the conflict surrounding large carnivore management in Norway — Implications for conflict management

Kim S. Jacobsen ^a , John D.C. Linnell ^b

FRONTIERS IN ECOLOGY and the ENVIRONMENT

Research Communications | [Open Access](#) |

Diverse perspectives of cat owners indicate barriers to and opportunities for managing cat predation of wildlife

Sarah L. Crowley, Martina Cecchetti, Robbie A. McDonald

Where are we at now

- Several focus-group discussions have been completed
- Preliminary draft of concourse (list of statements)

We would like your input

Breakout Sessions to review and comment on the current concourse



Co-conspirators: Education and Outreach

- Breakout Instructions
 - We will provide a link to a google form in chat
 - Breakout into groups of 4-5 people (Jason?)
 - Review form
 - Have a wonderfully riveting discussion
 - Complete four tasks by 2:45 break

Questions before we segue (segway?) to E&O WG

