



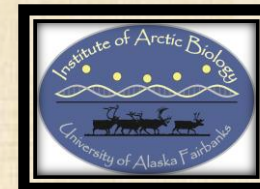
# Bonanaza Creek LTER

Institute of Arctic Biology, University of Alaska Fairbanks

## 2017 BNZ Symposium Information Management

Jason Downing

21 April 2017



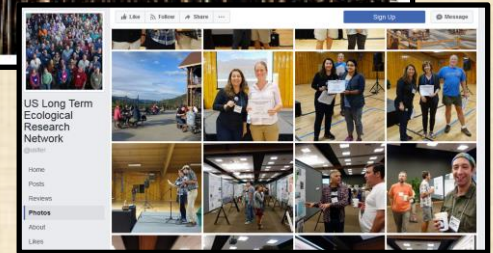
# Information Management Topics for Today

- LTER Network IM Landscape
  - Who are the new players?
  - What does it mean to you?
- Website Tour
  - What is new?
  - How to find stuff?
  - How to contribute?



# LTER Network

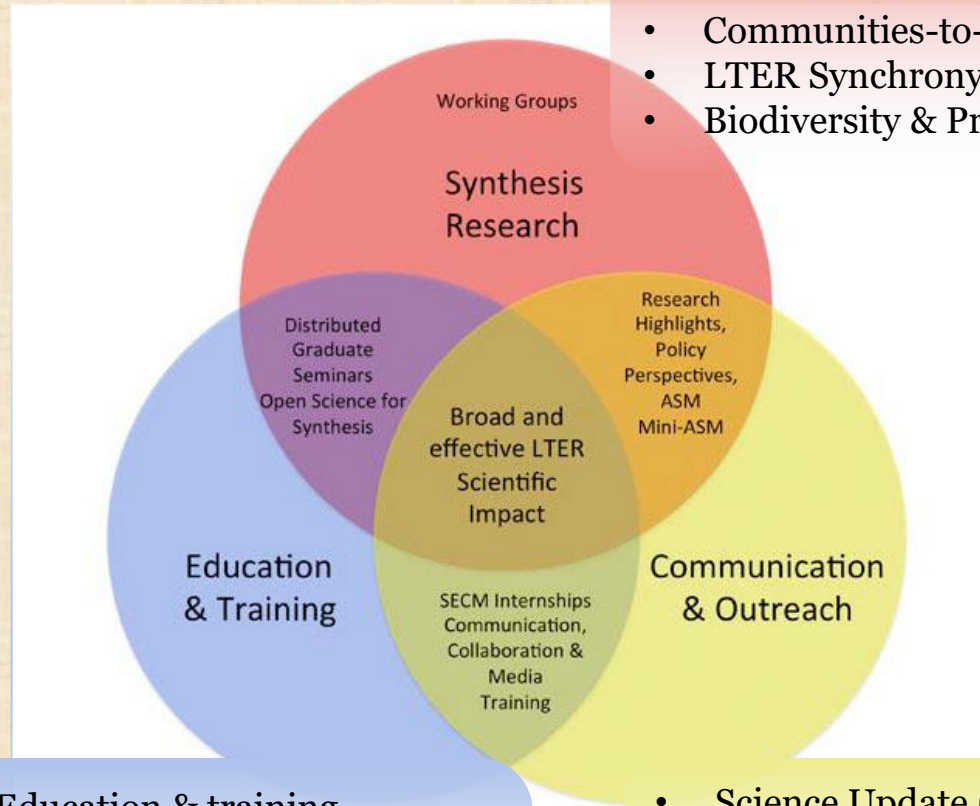
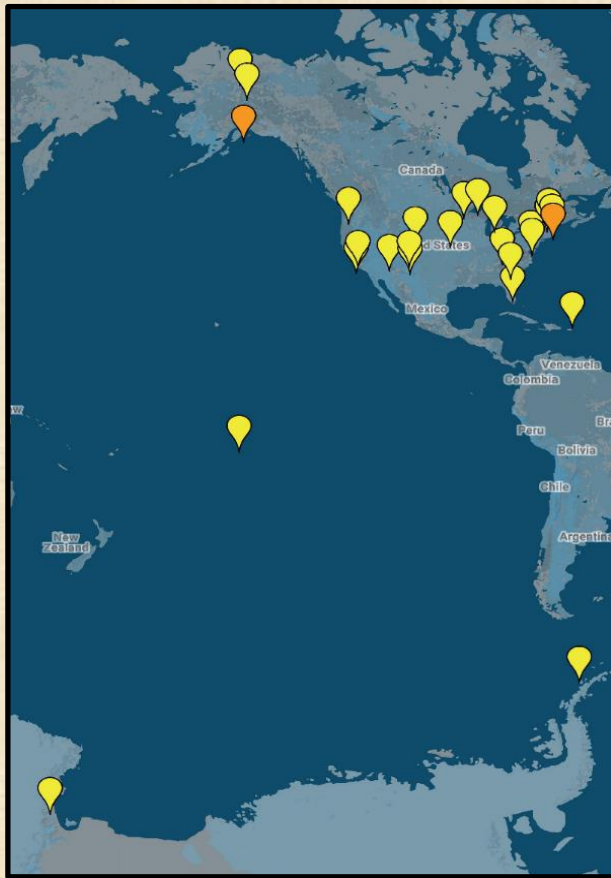
## Research Synthesis, Education, and Outreach Piece



- Component of NCEAS
- Manages Network Websites
- Network Synthesis, Communications, Education and Training



# The Long-Term Ecological Research Network Communications Office



- Stream Elemental Cycling
- LTER Metacommunities
- Communities-to-ecosystems
- LTER Synchrony
- Biodiversity & Productivity

- Education & training partnerships
- Data nuggets
- Schoolyard LTER book series
- ESA workshops
- Distributed graduate seminar

- Science Update (monthly)
- News from the NCO
- Web sites
- Social media
- Print materials
- Meeting outreach





US Long Term Ecological Research Network



**US Long Term Ecological Research Network**

Like This Page · September 16, 2015 at 6:00am · Edited · 🕒 · 🌐

Runner Up Student Poster Winner Alexandra Conway (BNZ) with Grizelle Gonzalez, Adjunct Professor, International Institute of Tropical Forestry



**US Long Term Ecological Research Network**

September 7, 2016 · 🌐

Bonanza Creek LTER and Arctic Boreal Vulnerability Experiment partner with locals to photograph landscape disturbances, then use this data to assess climate change vulnerability across the Arctic. Impressive use of citizen observations, field work, and remote sensing to help adaptation planning! [bit.ly/2cbh5oB](https://bit.ly/2cbh5oB)



# LTER Network

## Data Management Piece



## Environmental Data Initiative

- NSF-funded project which evolved from LTER
  - LTER Software, practices and data management style
  - Built on existing partnerships (NCEAS, ESIP, agencies)
- Accelerate curation and archive of environmental data
- Activities include data repository, dataset design practices, skills exchange and communication
- Programs served include: LTER, LTREB, OBFS, MSB



# Environmental Data Initiative

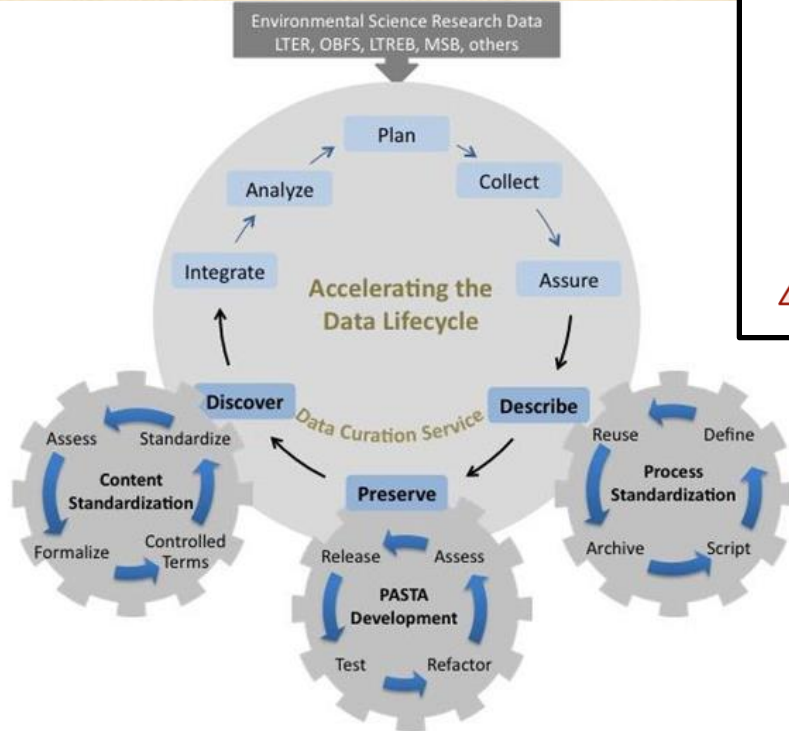
## EDI in the Landscape of Environmental Data Management

**Aggregators:**  
*DataONE, NCEI, EOS,  
EarthCube BB, ARS...*

**Repositories** **EDI**, KNB, IEDA,  
*Vertnet, ScienceBase, ARDS,  
CUAHSI, BCO-DMO, OBIS, DAACs,  
CyVerse...*

**Researchers:** *LTER, OBSF, LTREB, CZO,  
USFS, NAR, NPN, NWIS, NERS, IOOS,  
PISCO, GLEON, MacroSystems...*

**Funders:** *NSF, USDA, USGS, EPA, NOAA, NASA, States,  
Foundations, Consortiums...*





# ORCID ???



- Persistent Digital Identifier
- Integrated into manuscript and grant submissions
- Supports automated linkages
- <https://orcid.org/>
- TO DO:
  1. Go get one
  2. Let me know it





## F. Stuart Chapin

Primary Investigator

**Phone:** (907) 455-6408

**FAX:** (907) 474-6967

**Email:** [terry.chapin@alaska.edu](mailto:terry.chapin@alaska.edu)

**Website:** <http://terrychapin.org/>

**ORCID:** 0000-0002-2558-9910

**Address:** Department of Biology and Wildlife  
Institute of Arctic Biology: University of Alaska Fairbanks  
193 Arctic Health P.O. Box 757000  
Fairbanks, AK 99775  
United States

**Education:** Ph.D., 1973, Biology, Stanford University  
BA, 1966, Biology, Swarthmore College

**Roles/Affiliations:** [Institute of Arctic Biology](#)

ORCID  
Connecting Research  
and Researchers

EDIT YOUR RECORD | ABOUT ORCID | CONTACT US | HELP

3,290,532 ORCID iDs and counting. [See more...](#)

**F Stuart Chapin III**

**ORCID ID**  
[orcid.org/0000-0002-2558-9910](https://orcid.org/0000-0002-2558-9910)

**Also known as**  
Terry

**Keywords**  
arctic, boreal, resilience, self-reliance, social-ecological systems, stewardship

**Websites**  
<http://terrychapin.org/>

**Other IDs**  
Scopus Author ID: 7007033191

**Biography**

My research addresses the effects of changes in climate and wildfire on Alaskan ecology and rural communities. I explore ways that communities and agencies can develop options that increase sustainability of ecosystems and human communities over the long term despite rapid climatic and social changes. Through projections of future climate, ecology, and subsistence resources, my research helps people make more informed choices about options for long-term sustainability. My research in earth stewardship explores ways that society can proactively shape changes toward a more sustainable future through actions that enhance ecosystem resilience and human well-being. I pursue this internationally through the Resilience Alliance, nationally through the Ecological Society of America, and in Alaska through a community partnership that links the sustainability visions of rural indigenous communities with university research expertise to implement those visions.

**Education (2)**

**Stanford University: Stanford, CA, United States**  
1968 to 1973  
PhD (Biology Department)  
Source: F Stuart Chapin III Created: 2014-02-25

**Swarthmore College: Swarthmore, PA, United States**  
1962 to 1966  
BA (Biology Department)  
Source: F Stuart Chapin III Created: 2014-02-25

**Employment (3)**

**University of Alaska Fairbanks: Fairbanks, AK, United States**  
1998 to 2011  
Professor (Department of Biology and Wildlife)  
Source: F Stuart Chapin III Created: 2014-02-25

# BNZ Online Tour

- Homepage
- Research Info
- Research Sites
- Data
- People
- Publications

