




In a Time of Change: Bridging Science, the Arts and Society



Mary Beth Leigh



*The data may change our minds, but we need
poetry to change our hearts*

- Robin Wall Kimmerer
from Interview with a Watershed

OSU Oregon State University

the Spring Creek Project
for ideas, nature, and the written word

The Forest Log: A Journal of Poems, Essays, Articles and Other Creative Reflections on the Forest



Our aims are to catalyze thought and creativity; connect scientific concepts with human ideas, actions, the subconscious, and emotions; and foster new social-ecological dialogue



Ecological Reflections Network



www.ecologicalreflections.com

Originated in LTER program

Growing number of sites

Expanding to include others

- Organization of Biological Field Station sites
- US Forest Service experimental forests
- Denali National Park

➤ Foster collaborations between place-based ecosystem science, arts and and humanities

Approach

1. Take artists into the field



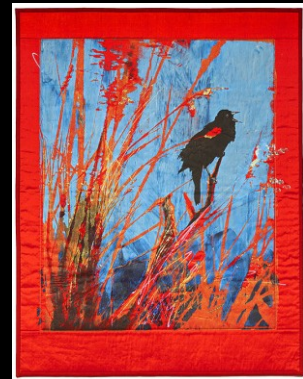
2. Promote dialogue between artists and scientists



3. Produce original art work



4. Present artistic work to the public



A Performance by Writers, Artists, and Scientists

In a Time of Change

2008

Friday,
March 11

7:30 p.m.

Pioneer Park
Auditorium

Admission Free

Reception following
in the Bear Gallery

Readings by
John Haines
Marjorie Cole
Carolyn Kremers
John Morgan
Mary Shields
Tori Vierck

Modern dance by
Deliquescent Designs
~ New York City
~ Oklahoma City
~ Fairbanks

Scientific Perspectives
Terry Chapin
Knut Kielland
Teresa Hollingsworth
Roger Russ

Music by
Susan Grace

Play by
Anne Hawley

Art by
Douglas Yates
Mary Matthews
Jamie Hollingsworth

Sponsors



IN A TIME OF CHANGE: ARTISTS AND SCIENTISTS
ENVISIONING THE FUTURE

PERFORMANCE

NEW WORKS BY

PAYVA INUPIAQ DANCERS • SUSAN GRACE
THEATRE UAF PERFORMANCE LAB • MAKING WAVES
CAROLYN KREMERS • DELIQUESCENT DESIGNS DANCE
SCIENTISTS TERRY CHAPIN, TERESA HOLLINGSWORTH
AND MARY BETH LEIGH

STEPHAN GOLUX ARTISTIC DIRECTOR

FRI. SEPT. 10 AND SAT. SEPT. 11, 2010
7:30 PM • PIONEER PARK THEATER

FREE ADMISSION • RECEPTION FOLLOWING IN THE BEAR GALLERY

ART EXHIBIT

NEW WORKS BY 24 ALASKAN ARTISTS • KARIN FRANZEN CURATOR

SEPT. 3 - 25, 2010 TUES. - SAT., NOON-6 PM

FIRST FRIDAY RECEPTION SEPT. 3, 5-7 PM

BEAR GALLERY

FREE ADMISSION



FOR MORE INFORMATION CONTACT MARY BETH LEIGH: MLEIGH@ALASKA.EDU • PRINTING BY FRED FREER

2008, ~350 attendees

2010, ~1000 attendees



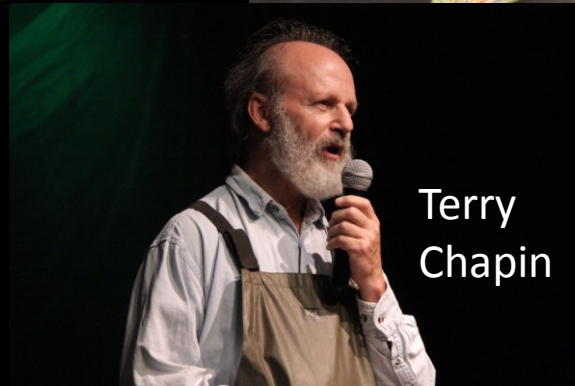
Making Waves



Theatre UAF
Performance
Lab (TUPL)



Carolyn Kremers



Terry
Chapin



Susan
Grace



Deliquescent Designs



Mary Beth Leigh



PAVVA Inupiaq Dancers

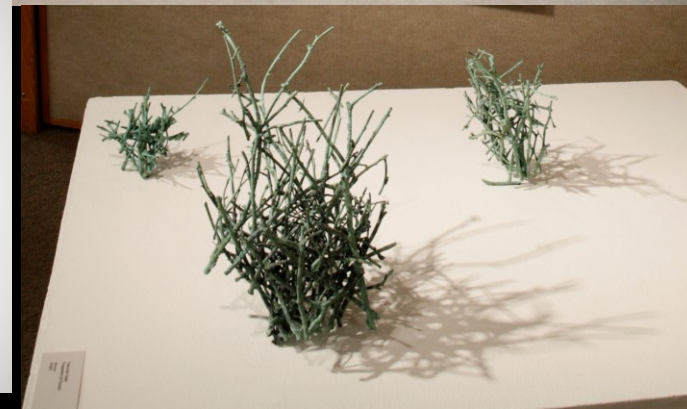
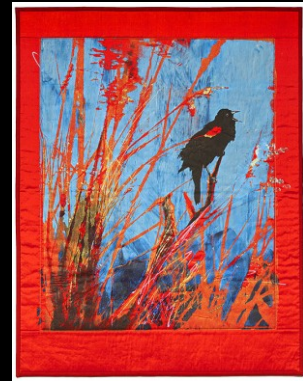
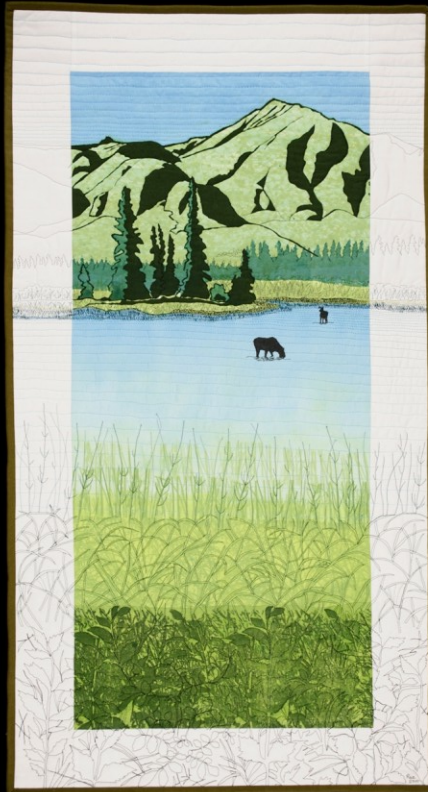
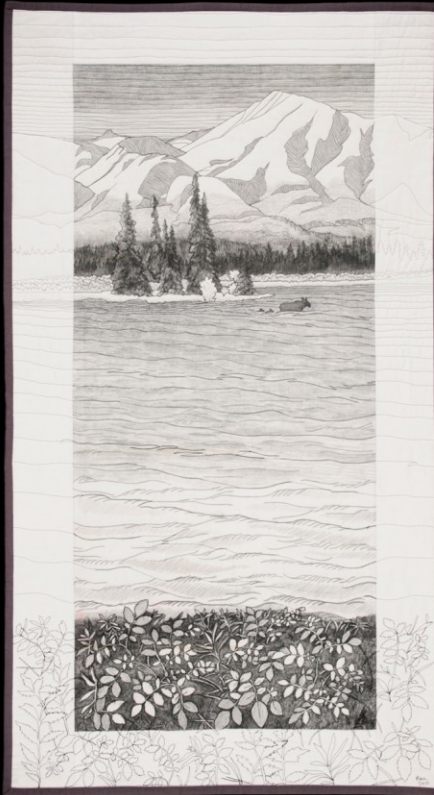
Deliquescent Designs

NYC International Fringe Festival 2010



Mary Beth Leigh , Stephanie Dixon, Karen Voyles, Tamora Petitt

ITOC: Envisioning the Future – Exhibit, Bear Gallery,
Sept. 2010



Upcoming projects – Ecological Reflections

- LTER Ecological Reflections Art exhibit tour
 - NSF Building, Washington, D.C. (March 2012)
 - Coincides with LTER Symposium
 - BNZ, NTL, HFR
 - http://www.nsf.gov/news/news_summ.jsp?cntn_id=123081
 - ESA, Portland (August 2012)
 - Portland International Airport (Jan-June 2013)



Ecological Reflections

- Increased web presence and coordination
- www.ecologicalreflections.com
- “How-to” presentations and workshops
 - ESA Portland (Aug 2012)
 - LTER All Scientists Meeting (Sept 2012)

Current ITOC project

In a Time of Change: The Art of Fire

- Partnership with JFSP, Alaska Fire Science Consortium, BNZ, Fairbanks Arts Association
- Visual arts
- Exhibit Aug 2012, Bear Gallery
- Tour to Alaska Pacific University, Anchorage

Project Background:

“...we increasingly see that fire is very much a social and cultural matter.”

“...successful fire management lies not only in sound decision making and effective operations, but also in successfully engaging and communicating with Alaskan Residents.”

The Art of Fire

Goals:

- Engage artists with fire managers & scientists
- Promote public understanding & awareness

Primary Components:

1. Professional Art Exhibit
2. Community Fire Art Show
3. Graphic Arts Competition

ITOC: Art of Fire

Exhibit August 2012 – Bear Gallery

- 9 Artists Selected
- Painting, Drawing, Sculpture, Photography, Fiber & Mixed Media



By Phil Marshall



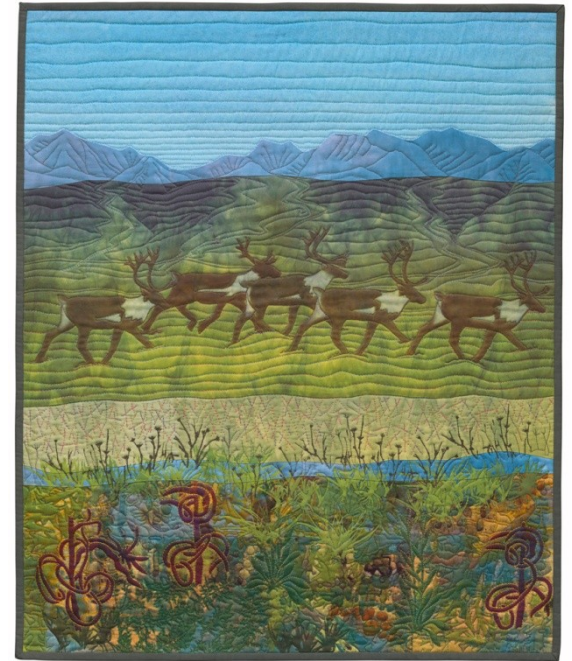
By Jessie Hedden



By Amanda Ellis



By Erin Hatter



By Ree Nancarrow



By Jennifer Moss

Field Trips - 2011



Fire Simulation at Chena Lakes



Photo by Amanda Ellis

Fire Simulation at Chena Lakes



Fire Simulation at Chena Lakes



Photo by Amanda Ellis

Fire Simulation at Chena Lakes



Photo by Amanda Ellis

Fire Simulation at Chena Lakes



Denali National Park



Denali National Park



Denali National Park



Photo by Tim Rains, NPS

Denali National Park



Denali National Park



Photo by Tim Rains, NPS

Denali National Park



Photo by Sean Proctor, NPS

Denali National Park



Photo by Sean Proctor, NPS

Denali National Park



Photo by Glenn Juday

BNZ LTER



BNZ LTER

Community Fire Art Show

- August 2012
- Woodway & Morris Thompson Cultural Center
- Show off your talent! Visual Arts
- Interested?? Contact Jennifer Northway
- Submission details coming this winter

“...I spent a happy sunny day learning about the myriad of ecological factors- wildland fire being just one of them- that have an impact on the precious boreal forest...”

-Erin Hatter



ITOC: The Art of Fire

Science/Fire Management participants:

- Doug Stockdale, BLM
- Maggie Rogers, DOF
- Morgan Warthin, NPS
- Jennifer Barnes, NPS
- Charlie Reynar, NPS
- Tim Rains, NSP
- Sean Proctor, NPS
- Jamie Hollingsworth, UAF
- Roger Ruess, UAF
- Glenn Juday, UAF

In a Time of Change: Trophic Cascades

- Partnership with Denali National Park & Preserve, Murie Science and Learning Center, BNZ LTER, Fairbanks Arts Association
- Multimedia exhibit
- Call for artist applications on BNZ website!
 - Deadline March 15

*Artists will be expected to **generate original, creative works** on the theme of predator / prey interactions and **discover new ways of expressing, demonstrating or representing** some of the basic concepts that underlie complex webs of ecological interdependence among plants, animals (including humans), and habitats.*

Other ITOC activities 2011

- Last Frontier Theatre Conference - Valdez, AK (June 2011)
 - Workshop for playwrights and actors by Golux and Leigh
- 2011 Alaska Fire Science Workshop (Oct 2011)
 - Presentation, Leigh, Northway
- AGU - San Francisco, CA (Dec, 2011)
 - Platform presentation, Leigh
- ITOC Steering Committee working on
 - Web presence
 - Institutional identity
 - Funding
 - Need help with your broader impacts??

Acknowledgements

- National Science Foundation
 - LTER Program
 - International Polar Year
 - Alaska EPSCoR
- Bonanza Creek LTER
- US Forest Service
- BLM Joint Fire Sciences Program
- US National Park Service
- University of Alaska Fairbanks
 - UAF Institute of Arctic Biology
- Fairbanks Arts Association
- New York City International Fringe Festival

Ecological Reflections
Fred Swanson (Andrews
Experimental Forest)

Photography

- James Barker
- Marie Gilbert
- Dennis McKinley

Art Curation

- Karin Franzen

Artistic Direction

- Stephan Golux