

Alaska Satellite Facility

Dr. Nettie La Belle-Hamer, ASF Director
Jessica Garron, ASF Science Consultant





Alaska Satellite Facility

Located in the Geophysical Institute
at the University of Alaska Fairbanks
since 1991

- NASA EOSDIS Data Center: SAR Data Center
- NASA Ground Network (GN) Station
- Americas ALOS Data Node (AADN)
- GeoData Center, including map sales



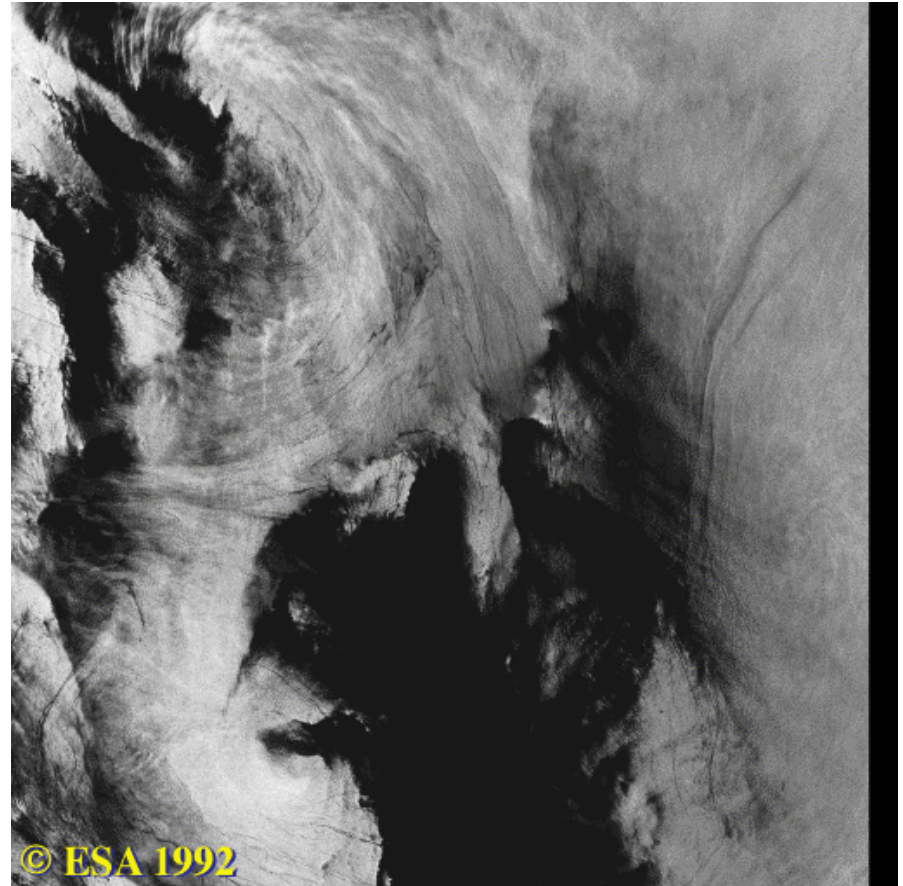
ASF Services



- Receive and archive satellite data
 - SAR expertise
 - Optical imagery experience
- Process data products
 - Multiple data levels
 - Flexible processing options
- Distribute data to the science, education, and government communities
 - GeoData Center, including map sales
 - Information products
- Provide user tools for accessing data
 - Assistance and guidance for users
 - Development and sustaining of ASF tools

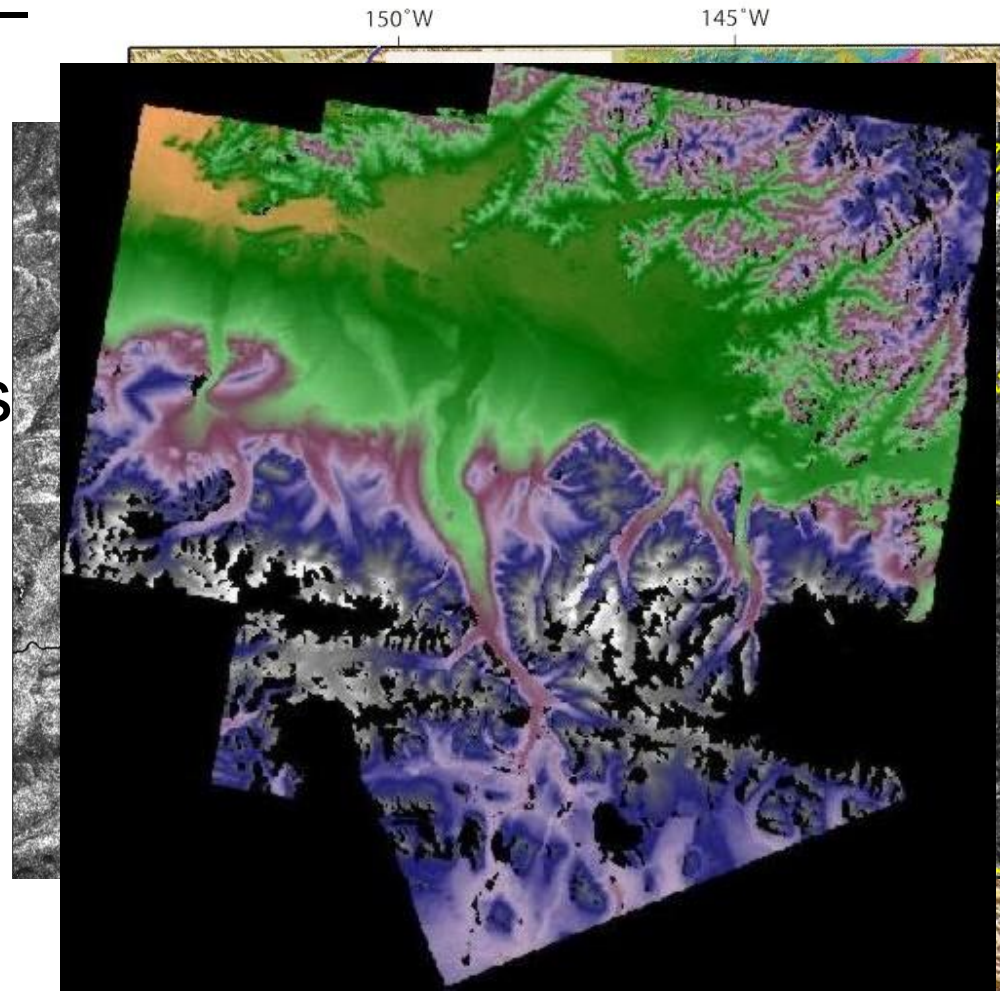
What can you see with ASF data?

- Geology
- Volcanoes
- Glaciers
- Hydrology
- Fires
- Seasons
- Human impact
- Habitat assessment
- Ice
- Open ocean



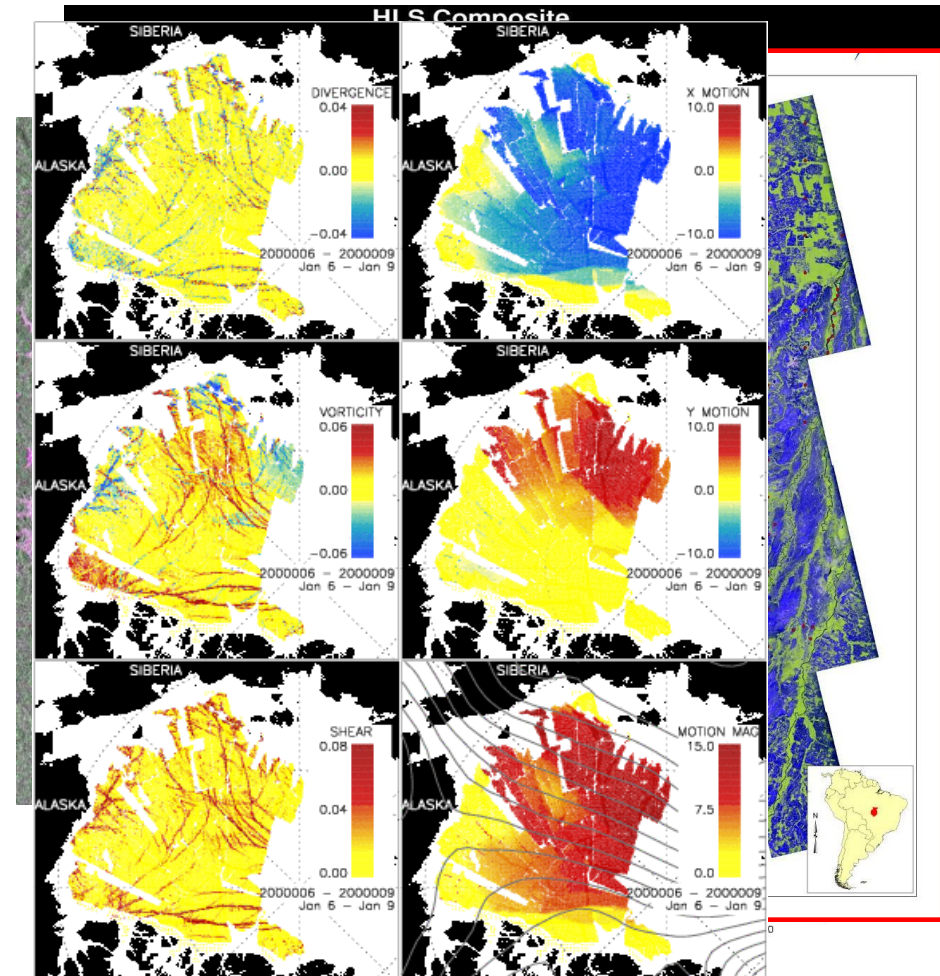
SAR images through clouds and at night

- Change detection
 - topology changes
 - velocities
- Digital Elevation Models
- Earthquake effects
- Subsidence
- Coastal Processes
- Ice margins, icebergs and ice tongues



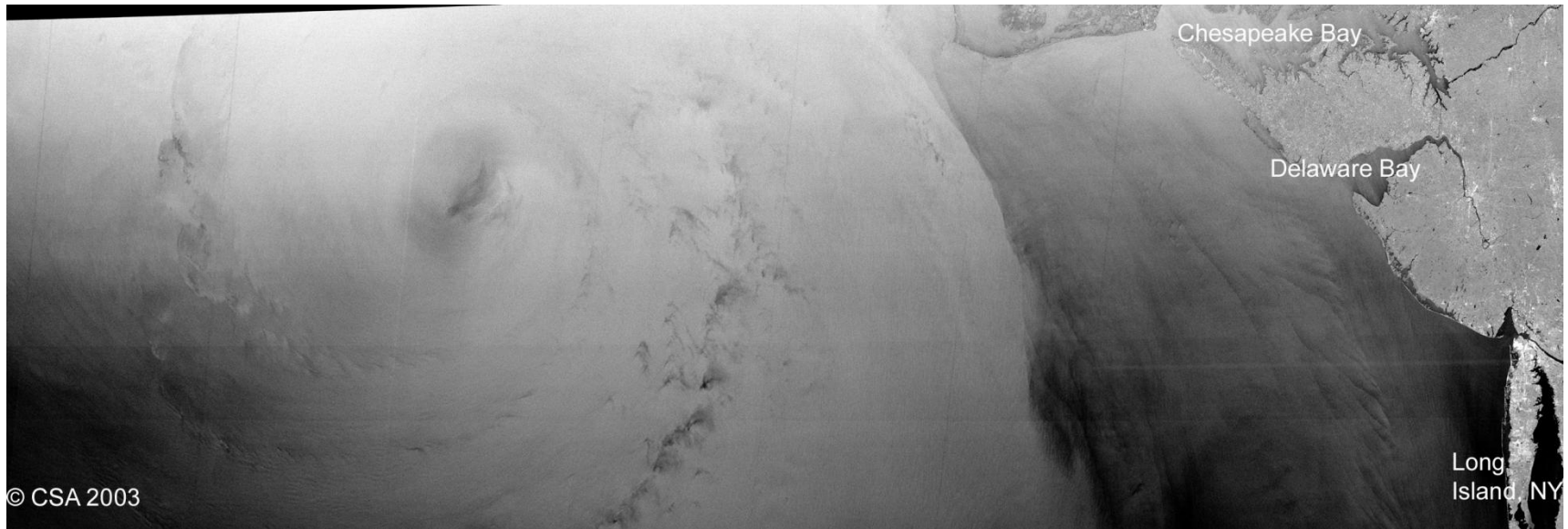
Source: Lu, Z., Wright, T. and Wicks, C., 2003, EOS, Vol. 84, No. 41

- Sea ice motion
- Antarctic Geology
- Antarctic Paleoclimate
- Grounding lines location
- Fusion products
- Winds on the ocean
- Reduction in field operation expenses



Near-Real-Time Products: Delivered 1-2 hours after acquisition

Hurricane Isabel



Imagery of Hurricane Isabel provided to:

- Researchers (members of the International Hurricane Watch Program)
- NOAA, USGS, and FEMA for disaster and flood monitoring



Come see us at ASF for data access

